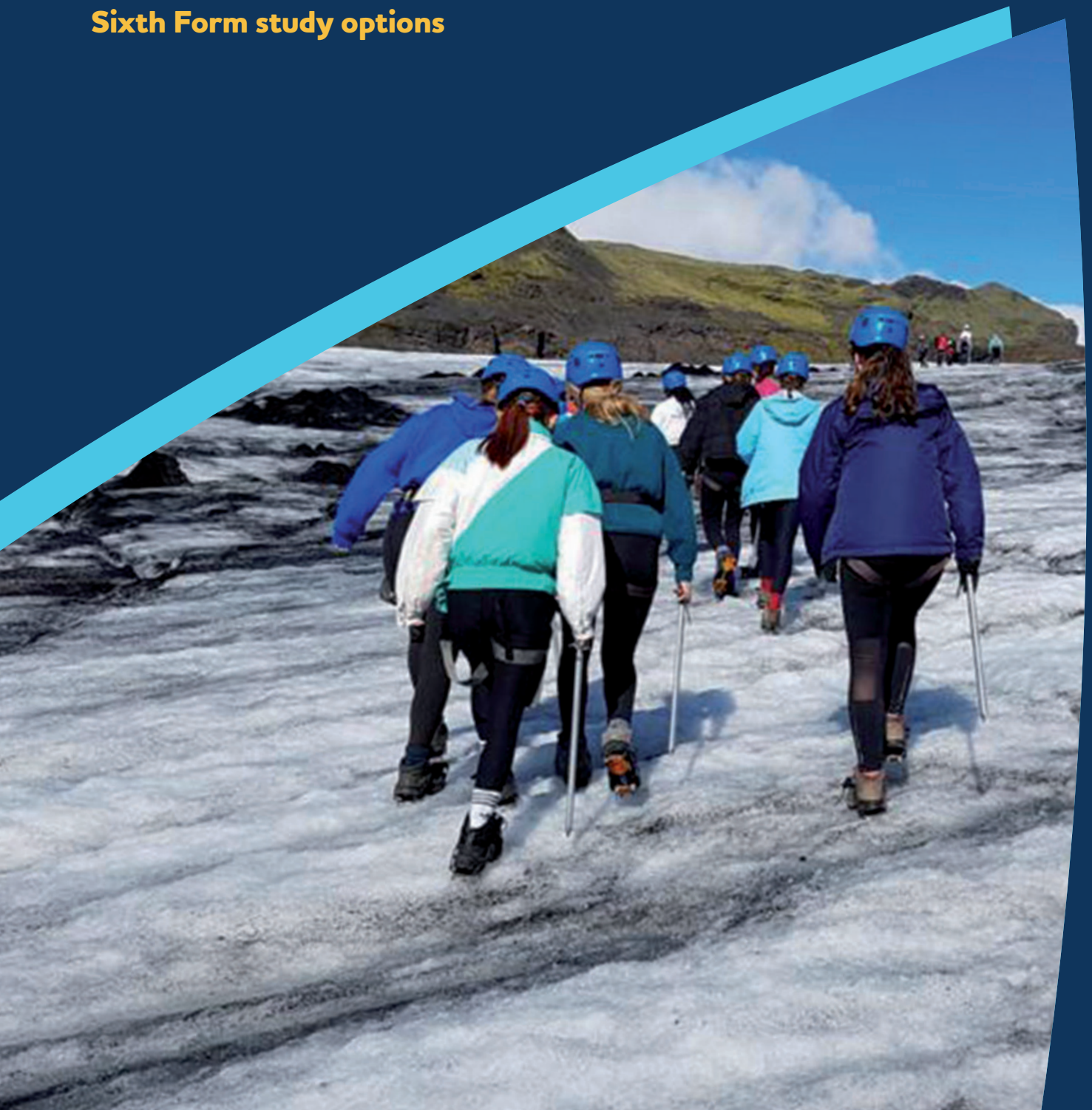




OXFORD
HIGH SCHOOL
GDST

A Level Geography

Sixth Form study options



A Level Geography

Few other subjects can provide such a vital forum for exploring the challenges we face today. Geography offers students the opportunity to study a traditional discipline, through issue-based enquiry.

“Geography is the subject which holds the key to our future.”

Michael Palin

Geography’s Relevance Today

There has never been a more important time to study Geography. It focuses on many pressing issues such as climate change and its impact on both our physical environment and human development, migration and changing population structures, globalisation, development and sustainability ruling the political agenda. Geography is the perfect place to further one’s understanding of the complex interrelationships involved, to ask questions and seek answers.

The Strength of the Subject

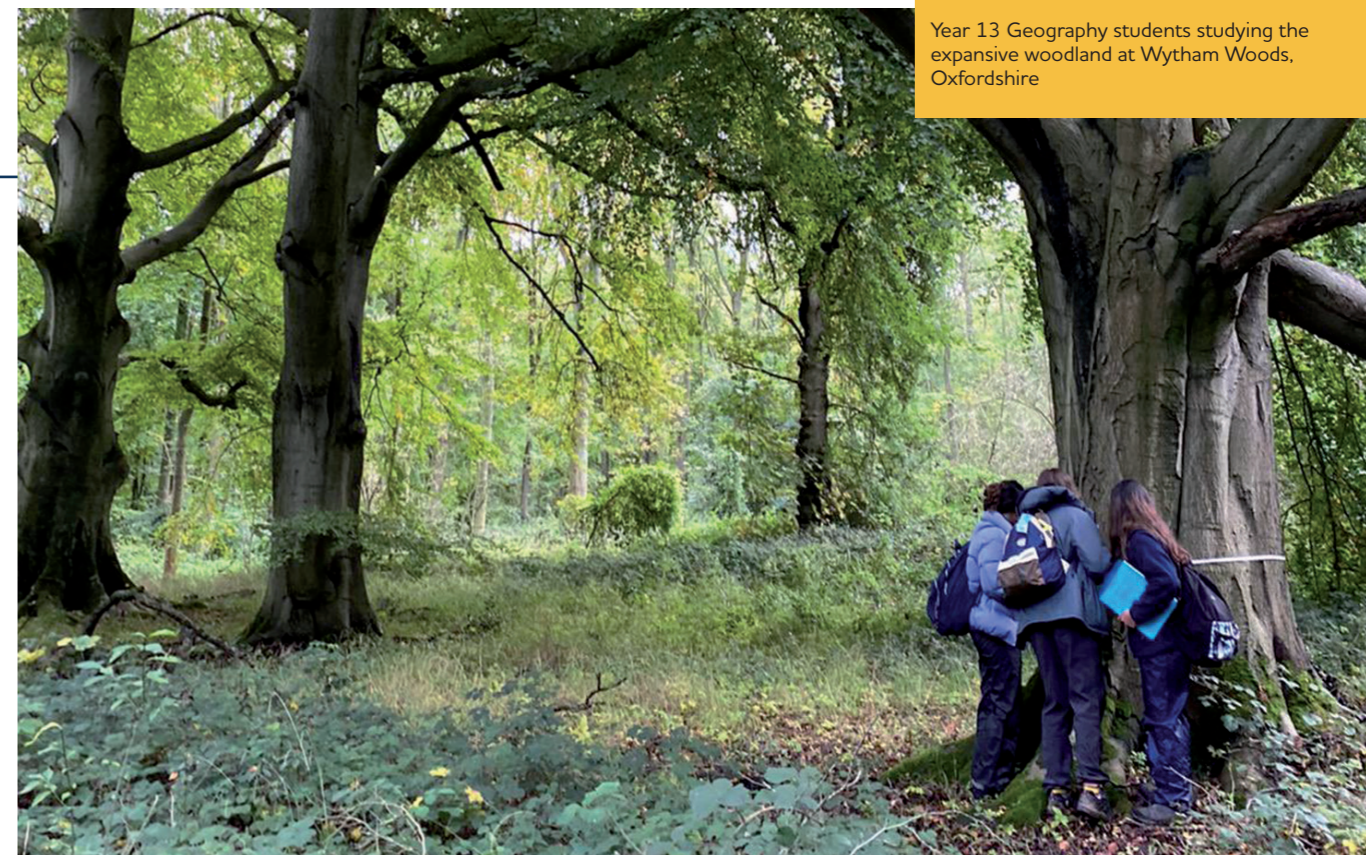
The great Antarctic explorer, Ernest Shackleton, said of his brave expedition team, “strength is in unity”. Geography’s strength comes from its unique ability to bridge the social sciences with earth sciences and unite knowledge from different disciplines to interpret the bigger picture within a spatial context.

You would find a room of geographers able and happy to analyse and evaluate viewpoints as well as scientific data. Geographers can acknowledge bias in sources, produce a strong written argument, offer new ideas, investigate a hypothesis through accurately gathered quantitative data, use statistical tests, and graph skills to reach conclusions. No wonder Geography combines so well with other subjects!

Students and success

The department has a record of excellent A Level exam results and Geography is consistently a popular choice of degree subject at Oxford High School.

	2023	2024
A*	29%	43%
A* - A	100%	86%
A* - B	100%	100%



Year 13 Geography students studying the expansive woodland at Wytham Woods, Oxfordshire

Leavers studying Geography at university in the last few years (destination and A Level subjects):

EDINBURGH	Economics, Geography, Spanish	DURHAM	Geography, History, Russian.
CAMBRIDGE (St Catherine’s)	Biology, English, Geography	IMPERIAL COLLEGE	Biology, Geography, Maths, Physics
CAMBRIDGE (Newnham)	Economics, Geography, Psychology	LEEDS	Music, Geography, Politics
QMUL	Chemistry, Geography, Maths	LEEDS	Economics, Geography, Maths
LEEDS	Biology, English, Geography	LSE	Economics, Geography, Maths
BIRMINGHAM	English, Geography, Music	LSE	Geography, Maths, Physics
DURHAM	Economics, Geography, Maths	MANCHESTER	French, Geography, Politics
DURHAM	Biology, Chemistry, Geography	UCL	Economics, Geography, Maths
DURHAM	Geography, History, Maths	UCL	Biology, Geography, Psychology
DURHAM	Biology, Geography, English	SOUTHAMPTON	Chemistry, Geography, Maths
DURHAM	Economics, Geography, History	EDINBURGH	Geography, Maths, Psychology
		EXETER	Chemistry, Geography, Maths

What Our Alumnae Say

“I took geography for A Level because I loved geography all round - especially the physical side. I was good at it at GCSE and I loved the topics we were going to be doing for A Level. In the future, I’d like to do a Geography degree at university as it gives a very broad view of careers. I also really loved the teachers - hence I stayed at OHS.”

“The A-level course at OHS was broad in both content and skills which eased the transition to university as I was more confident in tackling a range of topics in the compulsory modules. I particularly found that the carbon cycle topic and the space and place topic

from A-level fed into my course, so it was very satisfying to be sitting in lectures having already seen the content! Likewise when it came to essay writing, I was more confident in the topic having studied the theme at A-level, and I often found myself looking back through revision notes for definitions and key concepts.”

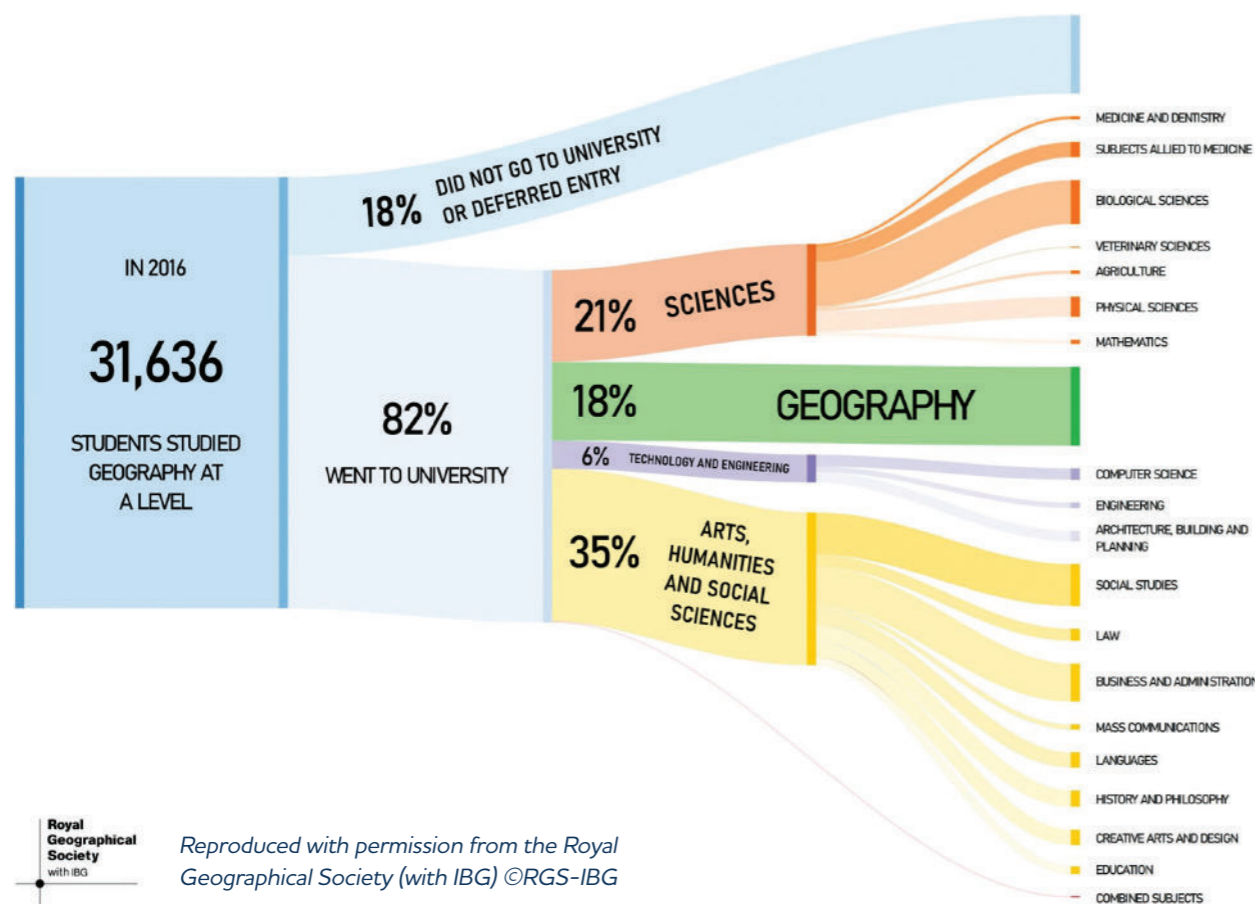
“The Geography NEA (coursework) process was my first experience of research design and implementation, allowing me to develop skills that proved invaluable at university level.”



Year 13 Geography trip to Slapton Ley, Devon

Where can Geography take you?

Post A Level Pathways – RGS



For students wishing to read Geography at university, it is usually expected that you will have studied it at A Level. For those wishing to take another degree, however, the top UK universities list Geography as a Facilitating or Preferred Subject so it can be one of your chosen A Levels.

Geography develops so many transferable skills (e.g. decision-making, essay-writing, statistical analysis and communication) that it is an attractive option if you wish to keep your options open. The Royal Geographical Society is delighted that entries at A Level are rising as the subject's relevance increases.

Degree subjects which Geography could lead to:

Anthropology	International Relations
Architecture	Languages
Biological Sciences	Law
Economics	Medicine
Geology	Politics
Geography	Physical Sciences
History	Population Studies

Combinations with Geography

The breadth of Geography means that it appeals to people with a wide range of interests. Some students may choose to study Geography alongside traditional sciences; others may choose a Humanities or Arts combination whilst some go for a mixture. (GCSE is helpful, but not essential.)

The Russell Group of universities regards Geography as a Facilitating Subject (with Biology, Chemistry, English Literature, History, Languages, Maths and Physics) and UCL lists it as a Preferred Subject. In 2015 the Guardian identified Geography as the 'must-have A Level'.

The course

AQA Geography 7037

The AQA Geography course is issue-based and diverse; allowing students to explore a wide range of different topics. Students are required to use their own wider reading to further their knowledge and understanding of case studies and locational examples to give further evidence and understanding to their work.

The course is examined as follows:

Component 1: Physical Geography	40%
Component 2: Human Geography	40%
Component 3: Geography fieldwork investigation Independent NEA (Non-Examined Assessment)	20%

Year 12 outline

- Physical Units – Water and Carbon Cycles (major stores at or near the Earth's surface and their dynamic cyclical relationships), and Coastal Systems and Landscapes (an appreciation of these dynamic environments)
- Human Units – Changing Places (focuses on students' engagement with places at a range of scales), and Population and the Environment (exploring the relationships between demographics, health and well-being)

Year 13 outline

- Physical Units – Hazards (volcanic, seismic and atmospheric)
- Human Units – Global Systems and Global Governance (the economic, political and social changes as a feature of global economy and society)
- An individual geographical investigation worth 20% of the A Level

Subject enrichment

We have close links to the Oxfordshire Geographical Association (GA) and students are encouraged to attend the GA programme of after-school lectures. Upcoming titles that our current A Level students are looking forward to attending virtually include 'Understanding place change' on the concept of place, 'Fresh water watch: a local case study'; the termly programme is always diverse and current, offering lectures on physical, human, political and environmental themes.

We also offer to our A Level students opportunities to enter essay competitions – including the RGS 'Young Geographer of the Year competition' and the opportunity to submit their work to the 'Routes Journal' – a Geography journal for A Level and undergraduate geographers.

A Level students have the opportunity to support Geography related learning that is taking place in other areas of the school. Students can apply to act as mentors to students at the Prep School to support with their climate projects; inspiring another generation of geographers.

Students will also have access to:

- Journal articles on JSTOR
- Geography Review Magazine subscription (electronically through the e-library, and the most recent hard copies in the library and Geography Department)
- ArcGIS mapping

Field trips

- A 4-day residential to Start Bay and Totnes, Devon in October focussing on coastal systems and the concept of place.
- A day in Jericho, Oxford examining change to support a detailed case study of the location.
- Links with Wytham Wood – exploring the woodland and investigating the Carbon Cycle in more detail.

Oxford High School
Belbroughton Road
Oxford, OX2 6XA

oxfordhigh.gdst.net



OXFORD
HIGH SCHOOL
G D S T